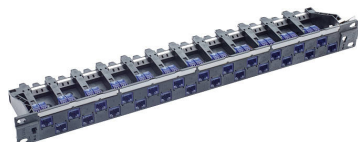


# 19" 1U PC Patch Panel 24xRJ45/u, Cat. 6, black, fully populated



- 19" 1U 24-port patch panel, empty, unshielded
- 24 Cat. 6 connection modules, RJ45/u incl. dust covers
- 19" mounting kit
- 4 labeling strips
- Cable ties
- Installation instructions

090.7086

## TECHNICAL DATA

DESCRIPTION	VALUE/VALUE RANGE
Standard / norm	EN 50173-1 IEC 60603-7: Electrical Characteristics of the Telecommunication Outlets ISO/IEC 11801
Protection class IP	IP 20
PoE	Yes
Shielding connector (A)	unshielded
Connector type (A)	RJ45
Category connector (A)	Cat. 6
Number of connectors (A)	24
Holder for connector / module	Special (without mounting plate)
Assembly	fully populated
Fastening	19 "
Rack mounting version	sub-rack
Capacity (ports)	24
Amount of height units	1 U

## MECHANICAL DATA

DESCRIPTION	VALUE/VALUE RANGE
Dimensions	482.6 mm x 43.65 mm x 98.4 mm / 19 in x 1.719 in x 3.874 in (W x H x D)
Color Code RAL	9005 Jet black
Material	plastic: PC, fiber-glass reinforced

# 19" 1U PC Patch Panel 24xRJ45/u, Cat. 6, black, fully populated

966739875

1 pcs

Modular patch panel with integrated cable tie shelf, 19" fastening kit, labeling fields with exchangeable labeling strips, prepared for optional two patch cord rings. The ports are prepared for a visual color coding system. Panel polycarbonate, fiber-glass-reinforced, halogen-free material, UL 94 listed. Color black, RAL 9005.

24 ports populated with

RJ45 connection module of Category 6, for the establishing of transmission channels of class E with up to 4 plugged connections, complies with Category 6 requirements of the standards ISO/IEC 11801, EN 50173-1, (DIN EN 50173-1) as well as TIA/EIA 568.2-D, de-embedded tested in acc. with IEC 60603-7-4, interoperable and backwards compatible with Cat. 5e and Cat. 5.

Suitable for 10GBASE-T applications in acc. with IEEE 802.3™ Section Four up to 500 MHz and 55 m.

Tested in line with R&M's manufacturing control, performing 100% inspection.

Compatible with RJ standard plugs (RJ11, RJ12, RJ45), PCB-free and tool-free Easy-Lock connection of installation cables AWG 26 - 22 (0.4 mm - 0.65 mm) and flexible cables AWG 26/7 - AWG 22/7. Parallel pair termination without crossover in acc. with TIA 568-A/B, gold-plated bronze contacts for >1000 mating cycles, IDC contacts with single-wire strain relief and >20 insertion cycles, contact resistance <50 mOhm, dielectric strength >1000 Veff. PoE and PoE+ compatible according to IEC 60512-99-001. With integral cable strain relief, including dust cover.

Material: halogen-free and heavy-metal free in acc. with EU directives RoHS 2.

Connection module Cat. 6, unshielded, with dust cover, cable tie and installation instructions.

## OPTIONAL ACCESSORY




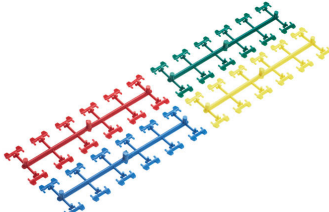
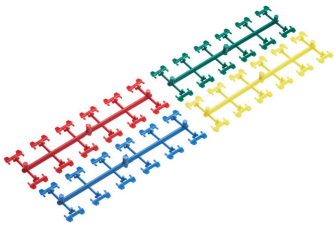
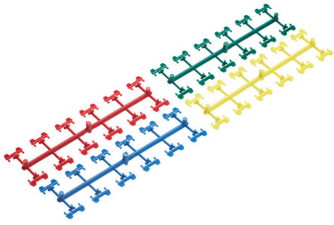
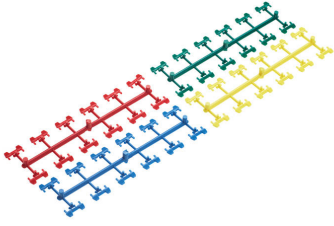
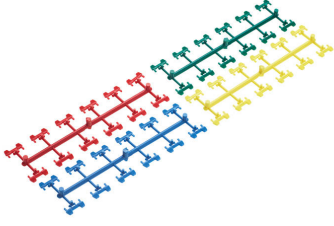
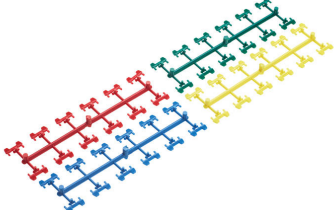
FOTO	DESCRIPTION	PU	PRODUCT NO.
	Labeling Sheet Fiberliner / 3U Global Module Holder	1 pcs	R30871
	Metal Ring, 70 mm	1 pcs	R502285
	Metal Ring, 90 mm	1 pcs	R502286
	PC Coding Clip, blue	1 pcs	R812461

FOTO	DESCRIPTION	PU	PRODUCT NO.
	PC Coding Clip, yellow	1 pcs	R812460
	PC Coding Clip, green	1 pcs	R810640
	PC Coding Clip, red	1 pcs	R810639
	PC Coding Clip, grey	1 pcs	R820300
	PC Coding Clip, brown	1 pcs	R832236